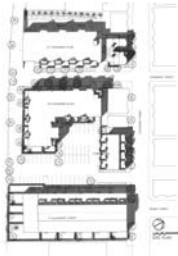


**Spring and Thorndike
Condominiums**
Cambridge, MA



In an industrial area rezoned to encourage housing, George Metzger combined renovation, adaptive reuse, and new construction to create a 96-unit development that blends with its low-scale residential surroundings. The four-building complex includes two renovated brick industrial buildings and two new infill structures. New townhouse units reinforce the existing streetscape and screen the parking area.

The materials, colors, and forms of the buildings were designed to reflect the patterns in the surrounding neighborhood. Existing and new red brick walls are combined with clapboard siding, projecting bays, and roof gables. Wherever possible, existing steel trusses and masonry walls are left exposed inside the new units.

Critical to the project's success was extended community review of design and impacts to garner local support for Planning and Zoning board approvals. The resulting development eliminated the nuisance of a manufacturing operation and duplicates the familiar patterns of the city.

